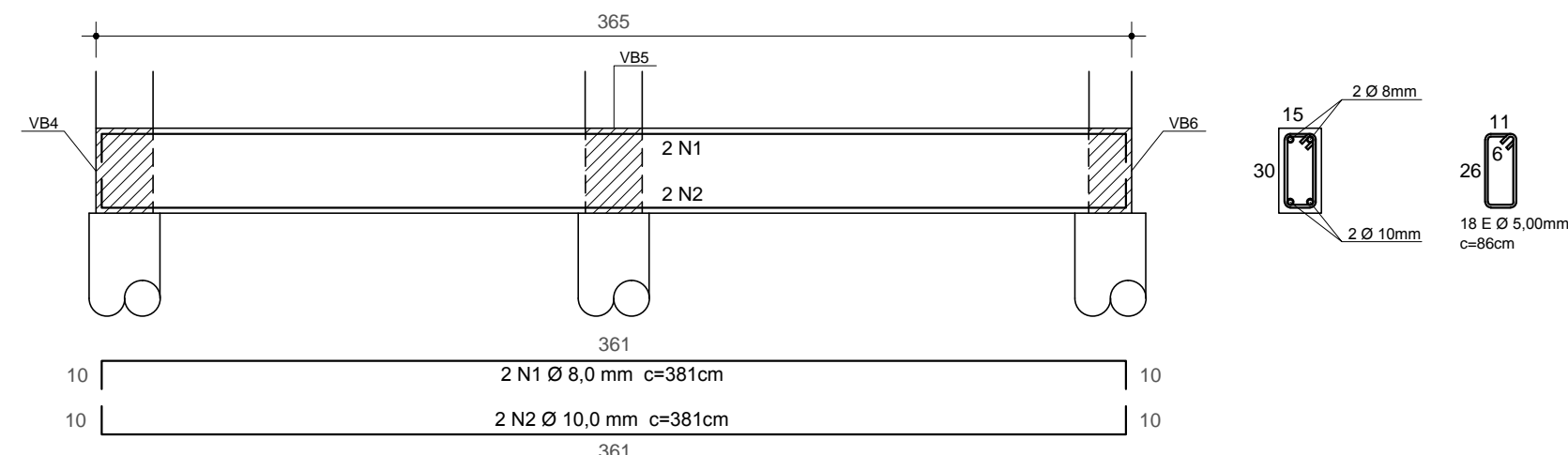
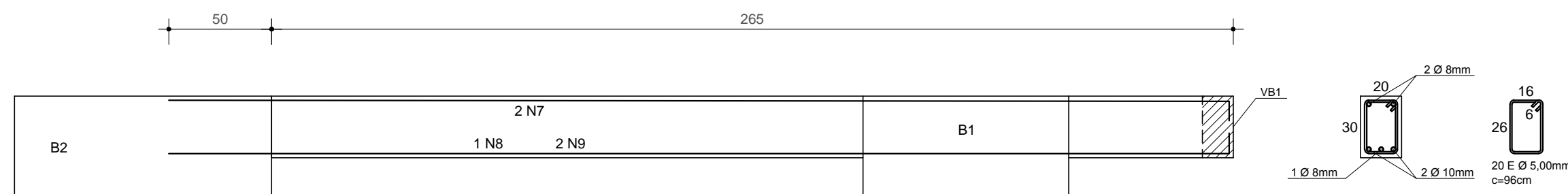


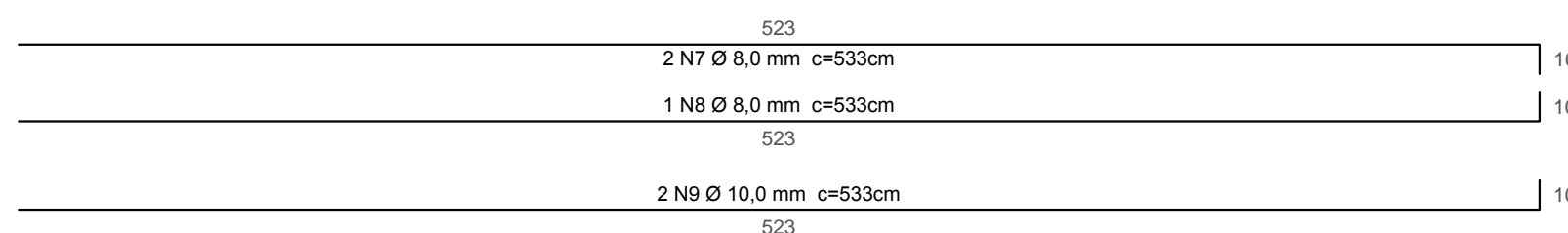
PLANTA DE LOCAÇÃO DE VIGAS BALDRAME
ESC.: 1:25



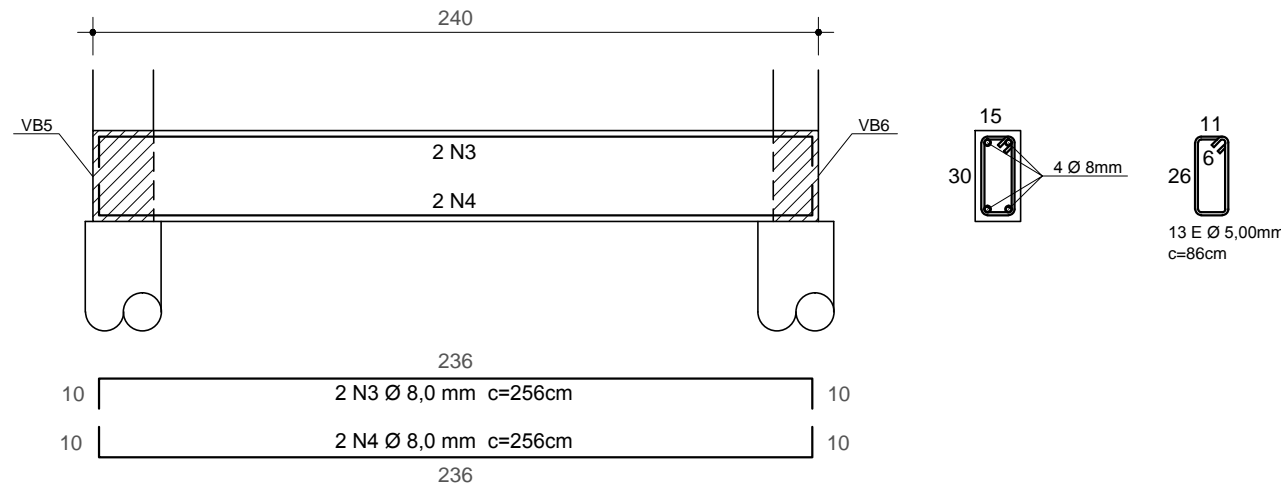
VB 1
15x30



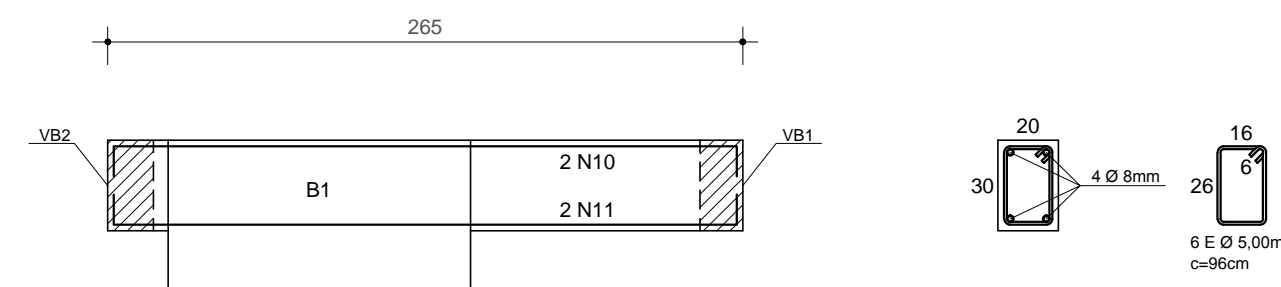
VB 4
20x30



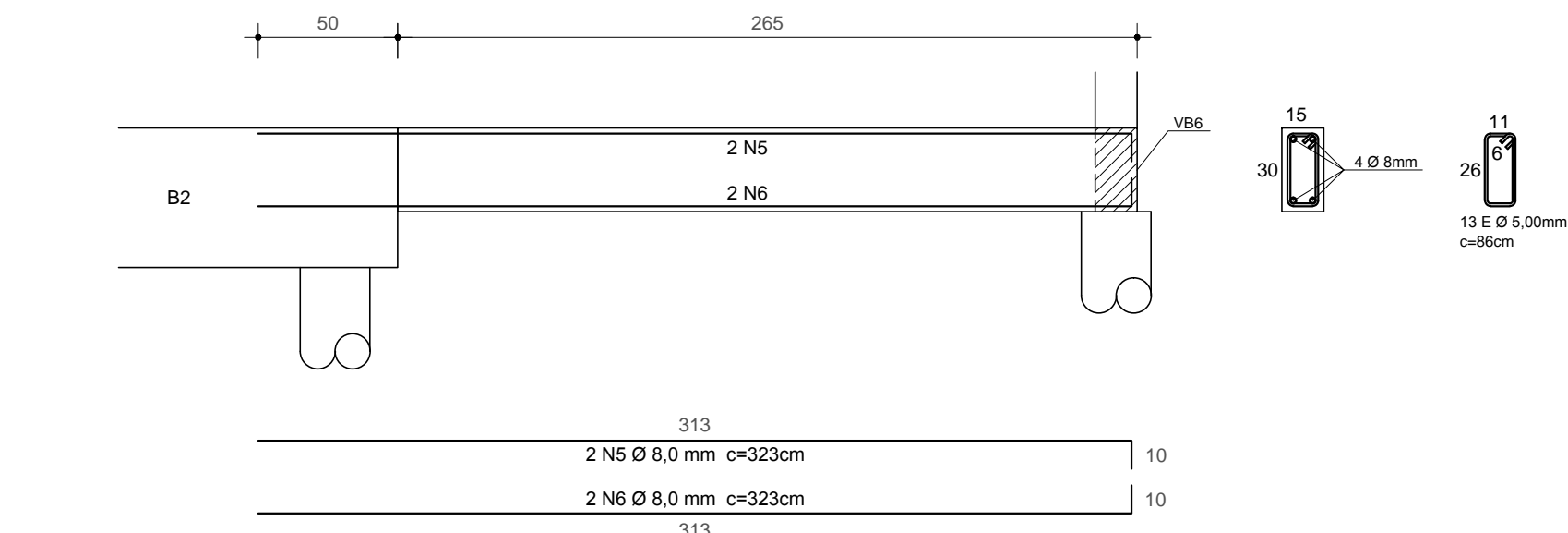
VB 3
15x30



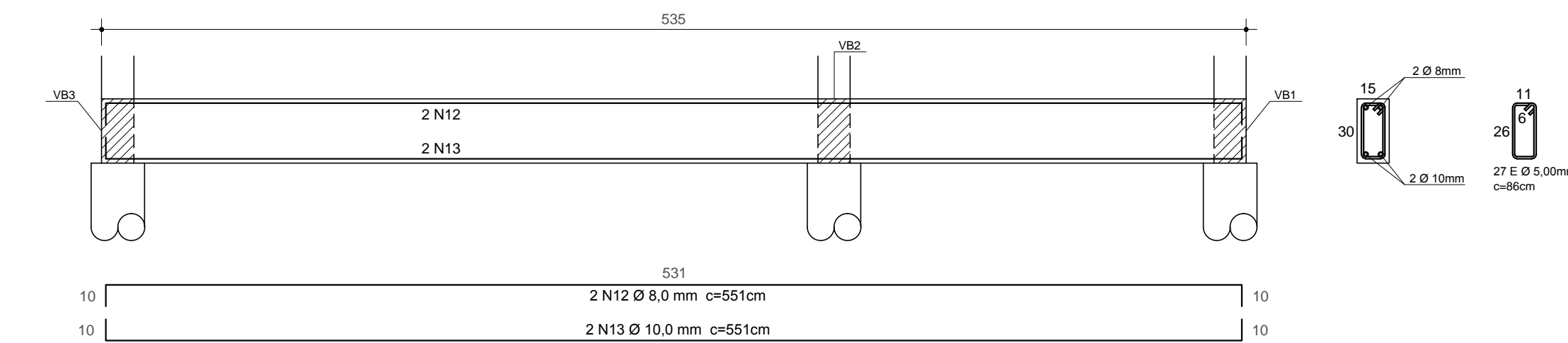
VB 2
15x30



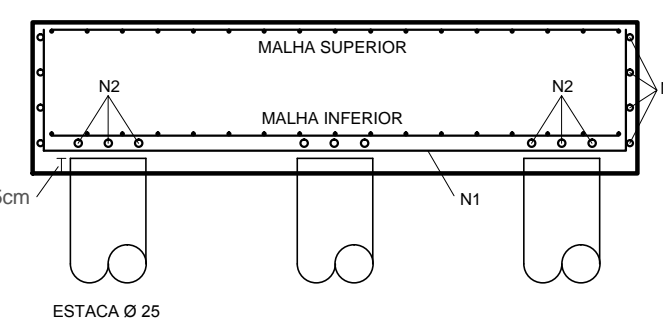
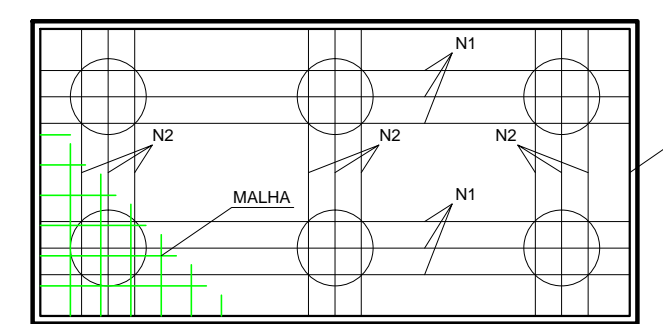
VB 5
20x30



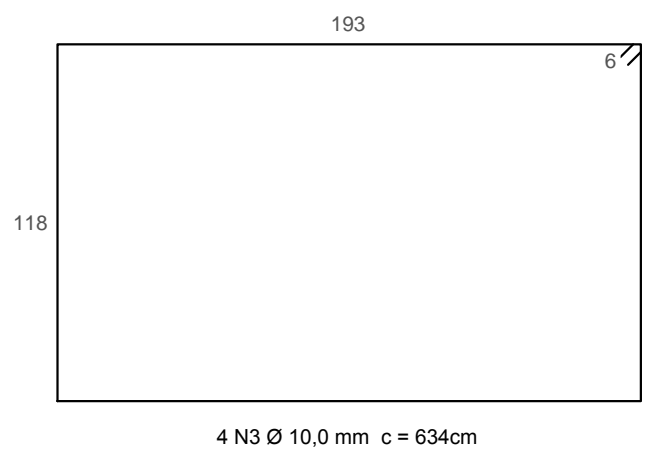
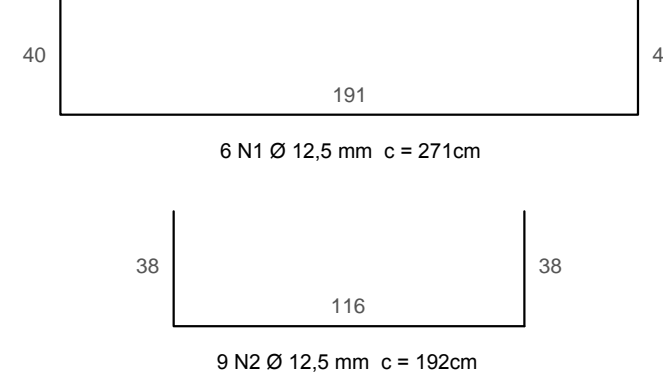
VB 3
15x30



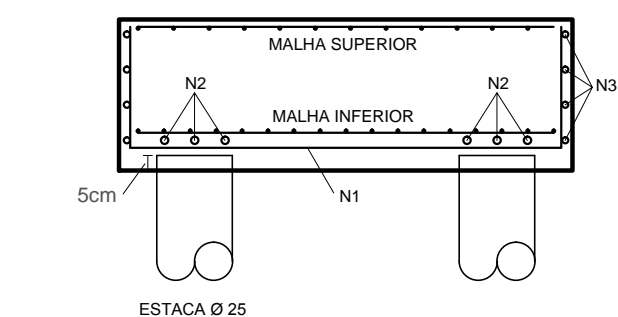
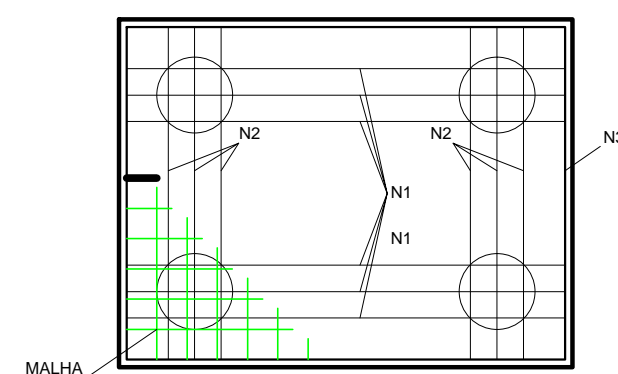
VB 6
15x30



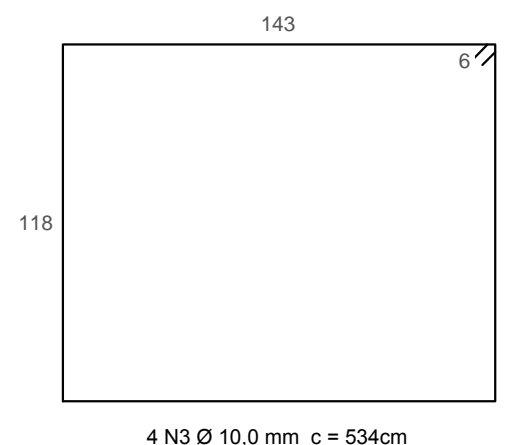
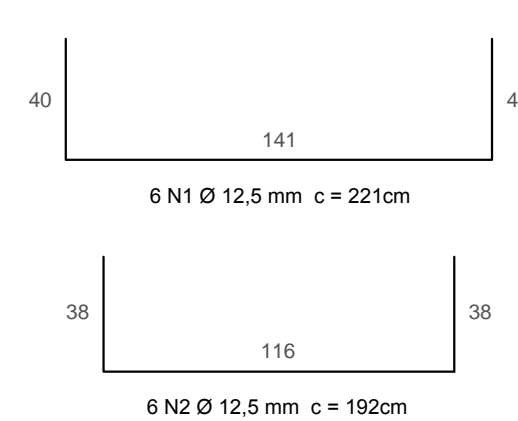
BLOCO B1 100 X 200 X 50
ESC.: 1:25



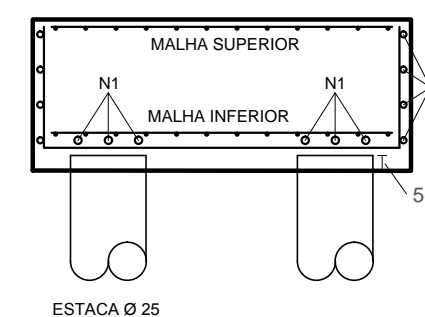
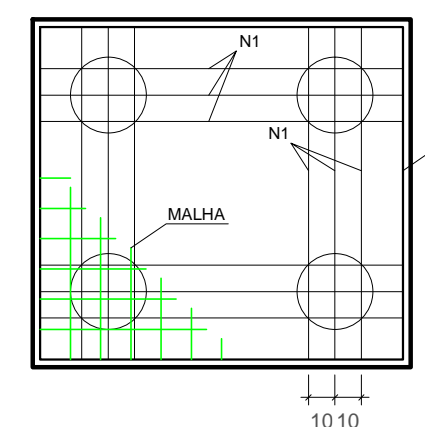
MALHA SUPERIOR E INFERIOR
AÇO CA 60 Ø 4.2 mm
e = 10
REFERÊNCIA Q138
TELA SOLDADA



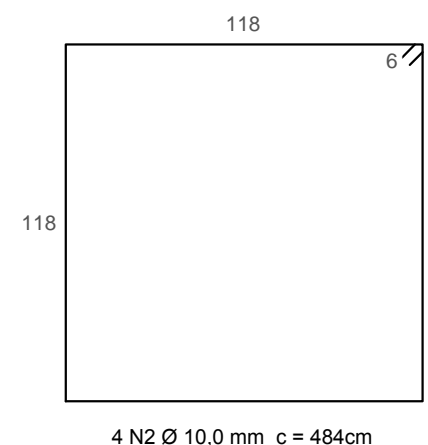
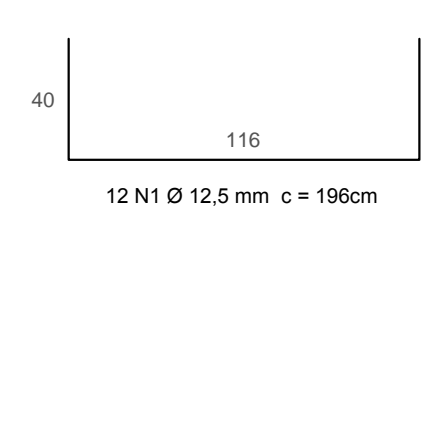
BLOCO B2 125 X 150 X 50
ESC.: 1:25



MALHA SUPERIOR E INFERIOR
AÇO CA 60 Ø 4.2 mm
e = 10
REFERÊNCIA Q138
TELA SOLDADA



BLOCO B3 125 X 125 X 50
ESC.: 1:25



MALHA SUPERIOR E INFERIOR
AÇO CA 60 Ø 4.2 mm
e = 10
REFERÊNCIA Q138
TELA SOLDADA