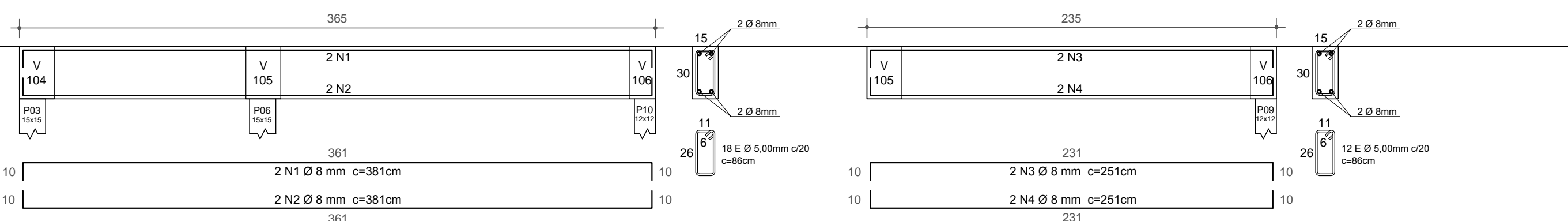
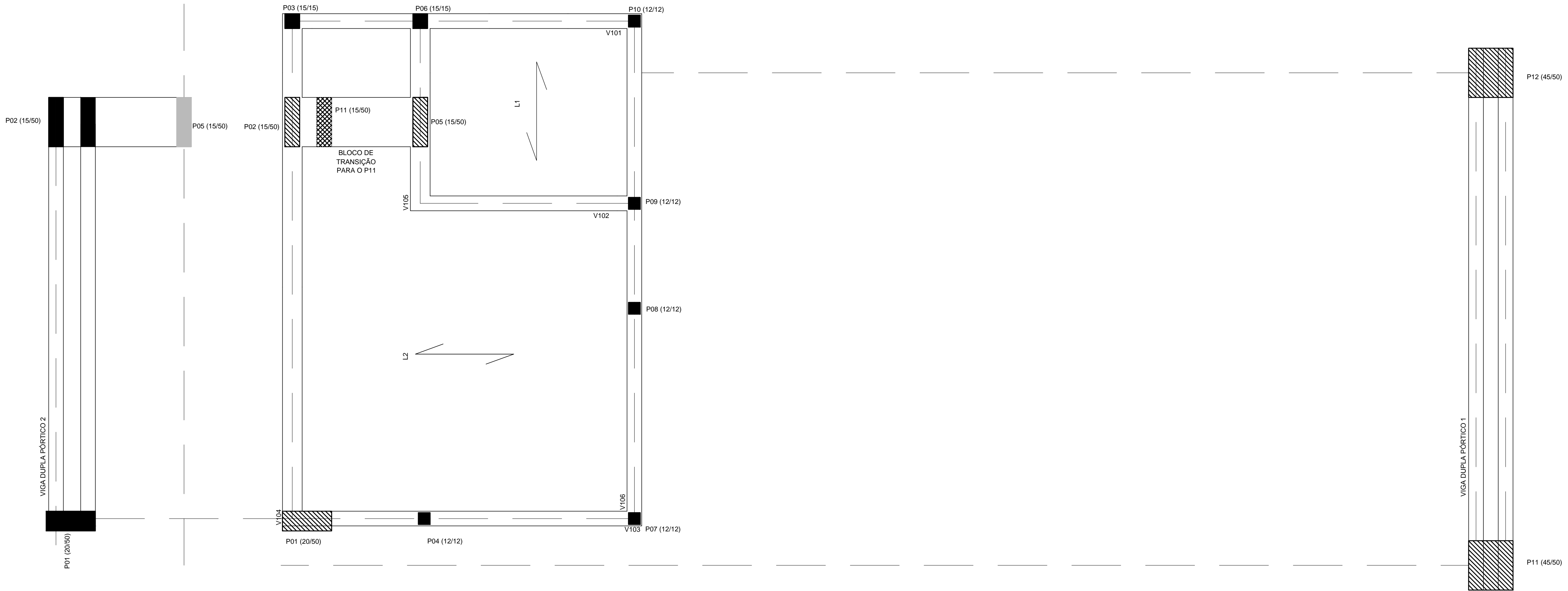
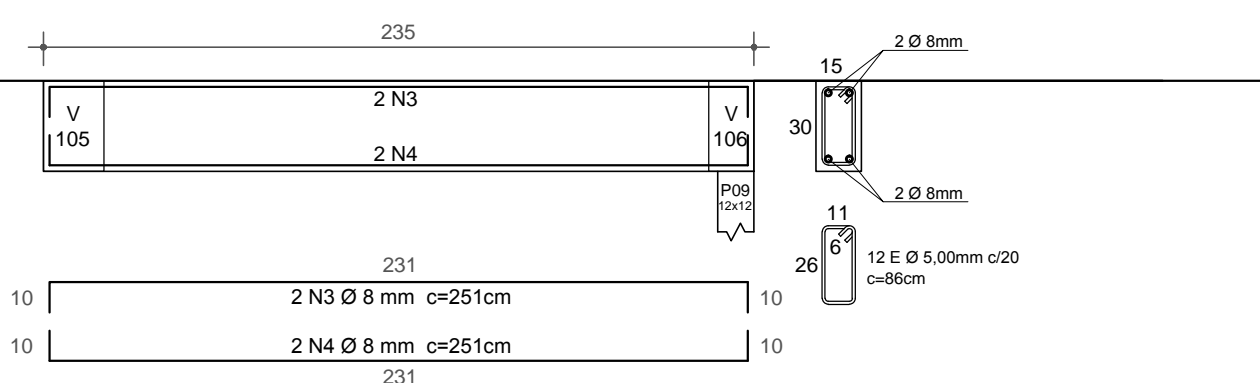


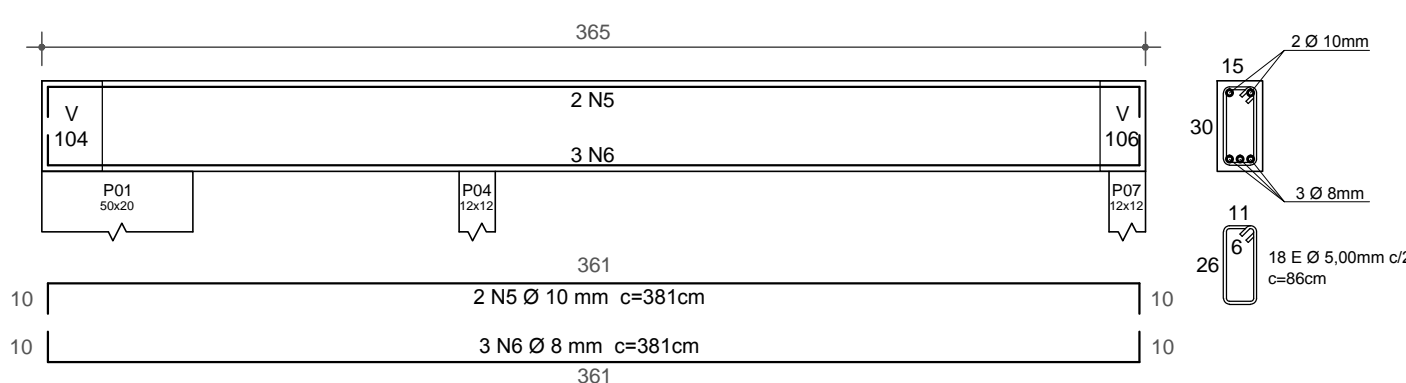
BLOCO DE TRANSIÇÃO PARA O P11  
NÍVEL 2.85M  
ESC.: 1:25



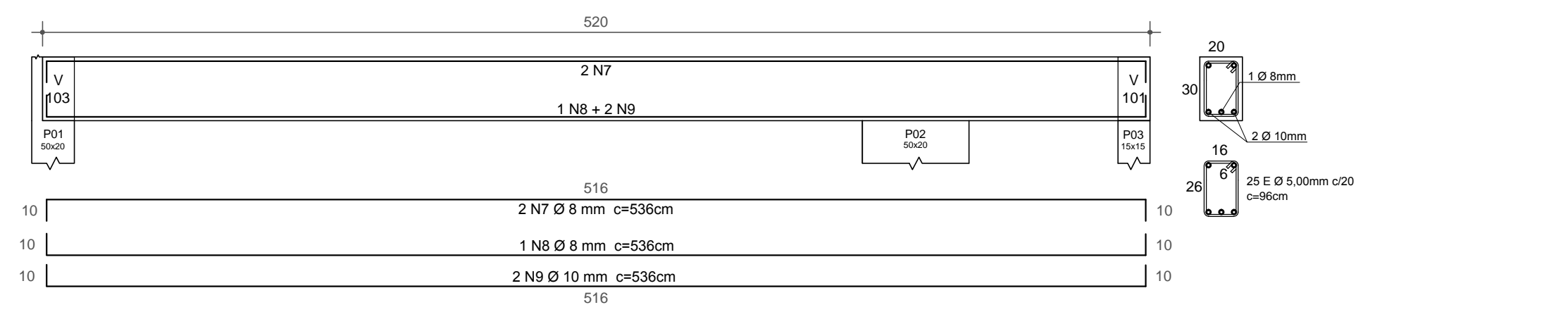
V101  
ESC.: 1:25



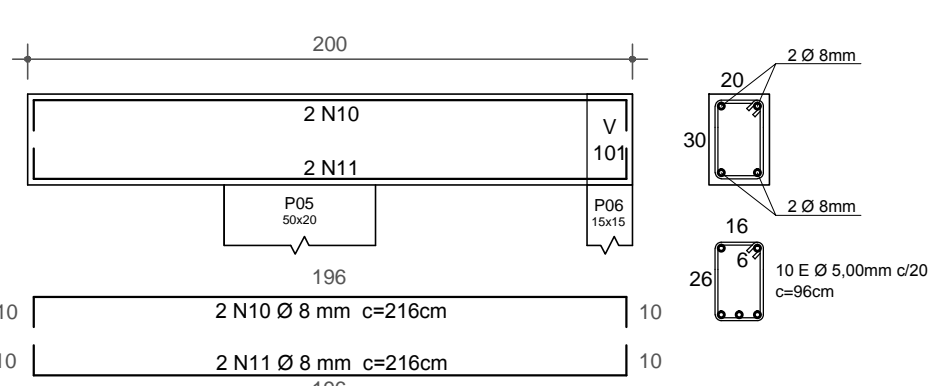
V102  
ESC.: 1:25



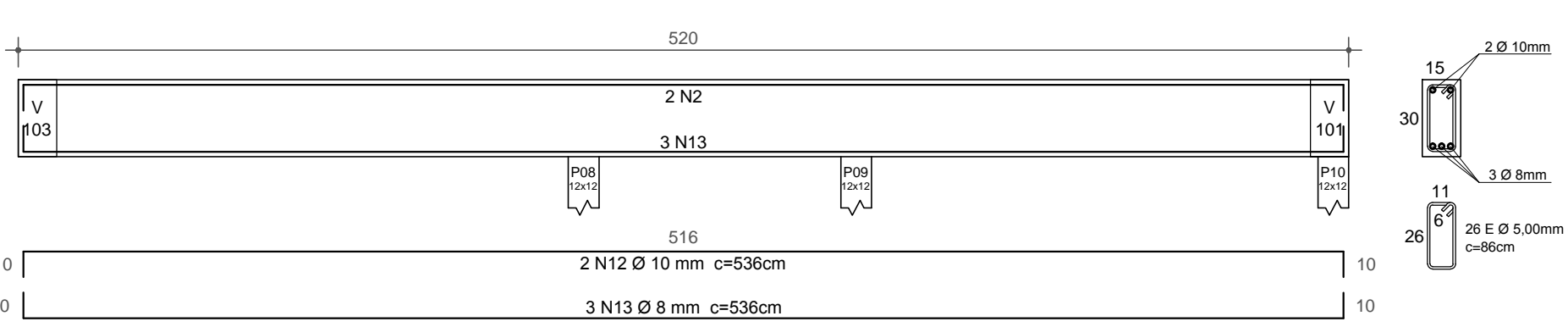
V103  
ESC.: 1:25



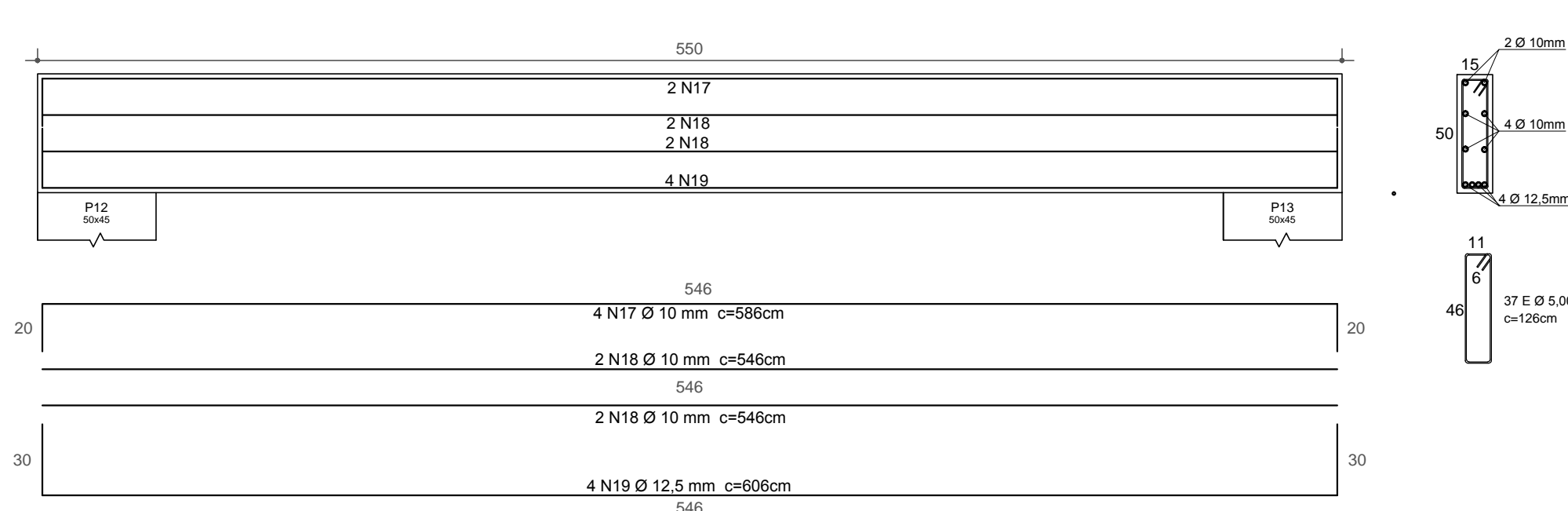
V104  
ESC.: 1:25



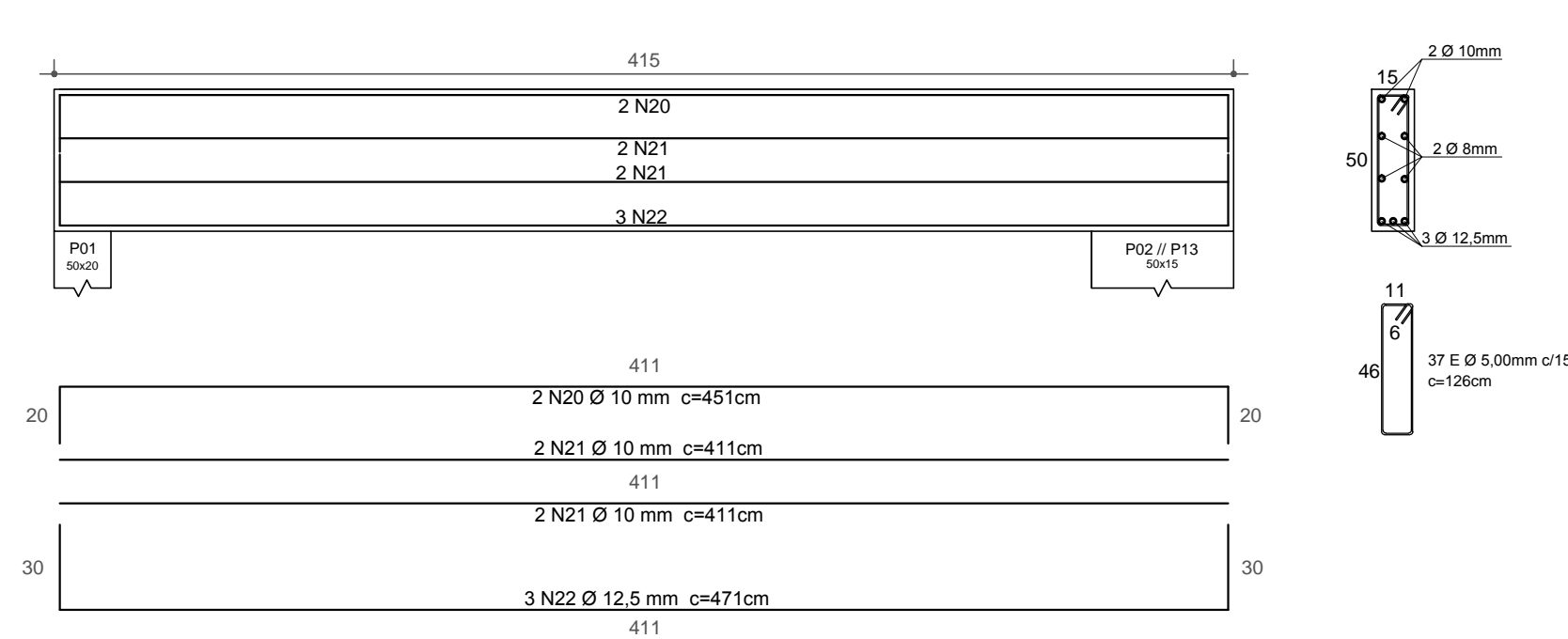
V105  
ESC.: 1:25



V106  
ESC.: 1:25



VIGA DUPLA DO PÓRTICO 1  
ESC.: 1:25



VIGA DUPLA DO PÓRTICO 2  
ESC.: 1:25

LEGENDA PILARES		RESUMO AÇO - PILARES: CA 50 E CA 60			
	PILAR QUE SEGUE	AÇO	Ø (mm)	COMP (cm)	PESO (kg) S/ PERDA
	PILAR QUE NASCE	CA 50 A	8,00	7751	30,92
	PILAR QUE MORRE	CA 50 A	10,00	14734	90,91
		CA 50 A	12,50	7280	70,11
		CA 60 A	5,00	25672	39,53
		PESO TOTAL CA 50 A		191,84	
		PESO TOTAL CA 60 A		39,53	
		ÁREA DE FORMA		24,38 m²	
		VOLUME DE CONCRETO		2,90 m³	

atoengenharias@outlook.com

**PREFEITURA MUNICIPAL DE TARUMÃ**  
Secretaria Municipal de Obras

OBJETO: CONSTRUÇÃO DA PORTARIA  
UNIDADE: PAÇO MUNICIPAL  
PRANCHAS: DETALHAMENTO DE VIGAS SUPERIORES  
ENSP CIVIL RESPONSÁVEL: RUI CESAR SPERA - CREA 0601659760  
PREFEITO: OSCAR GOZZI

FOLHA: EST - 03  
TÍT: 28027230181577883  
ARQUIVO: 0204  
ESCALA: 1:25  
DATA: 17/12/2018  
DESENHO: ANDRÉ C. BOTELHO